


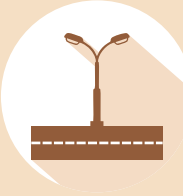




Welcome to
Vishwa Park of Tomorrow

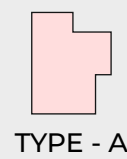


3, 2 & 1 BHK LUXURIOUS LIVING



AMENITIES
AT A GLANCE

 Gated Community	 Rcc Road With Lighting Polls	 24x7 Security	
	 Planned Sitouts	 24x7 Water Supply	 Road Side Thick Plantation



TYPE - A



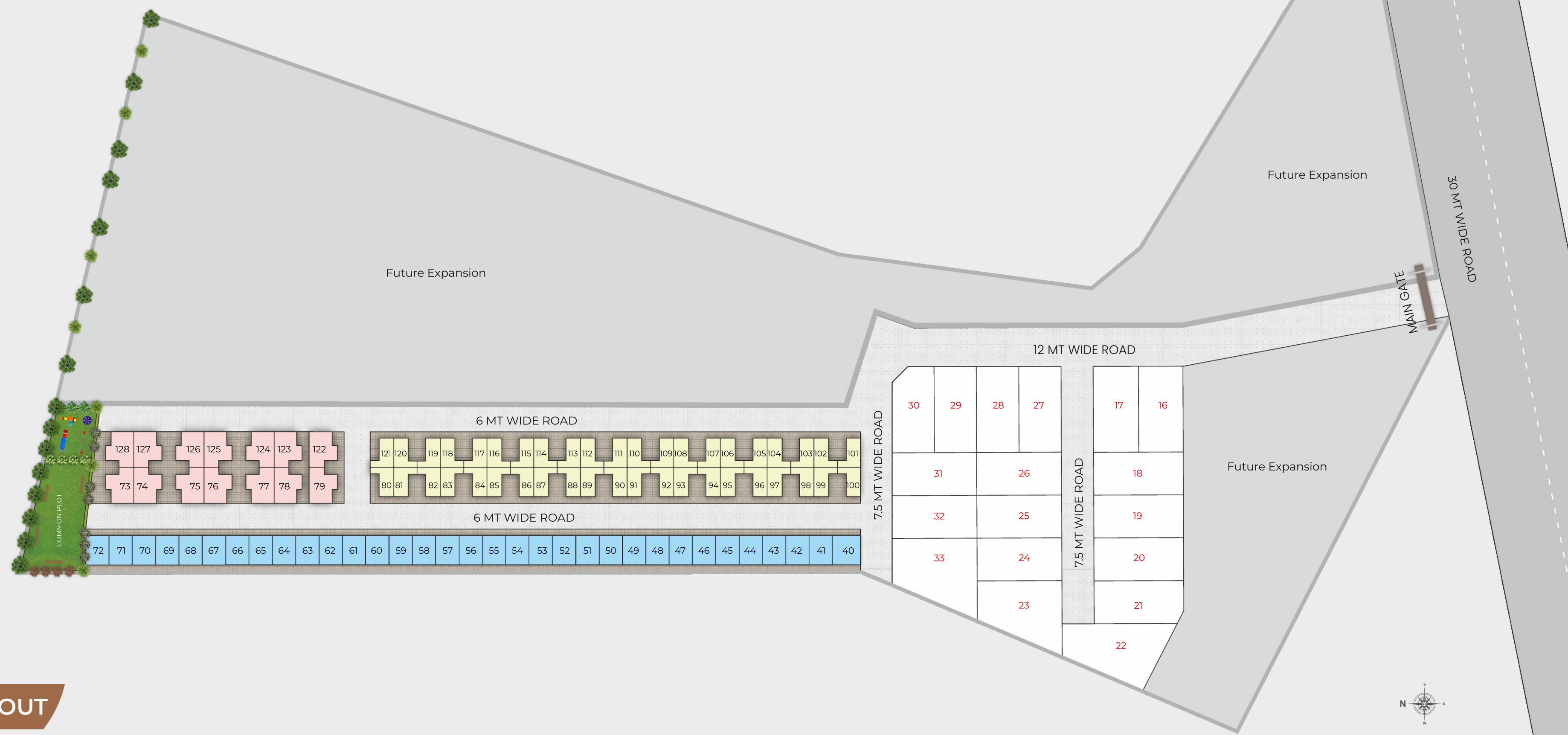
TYPE - B



TYPE - C

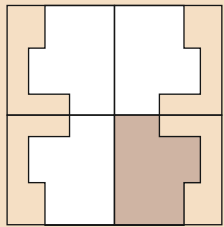


OPEN PLOT



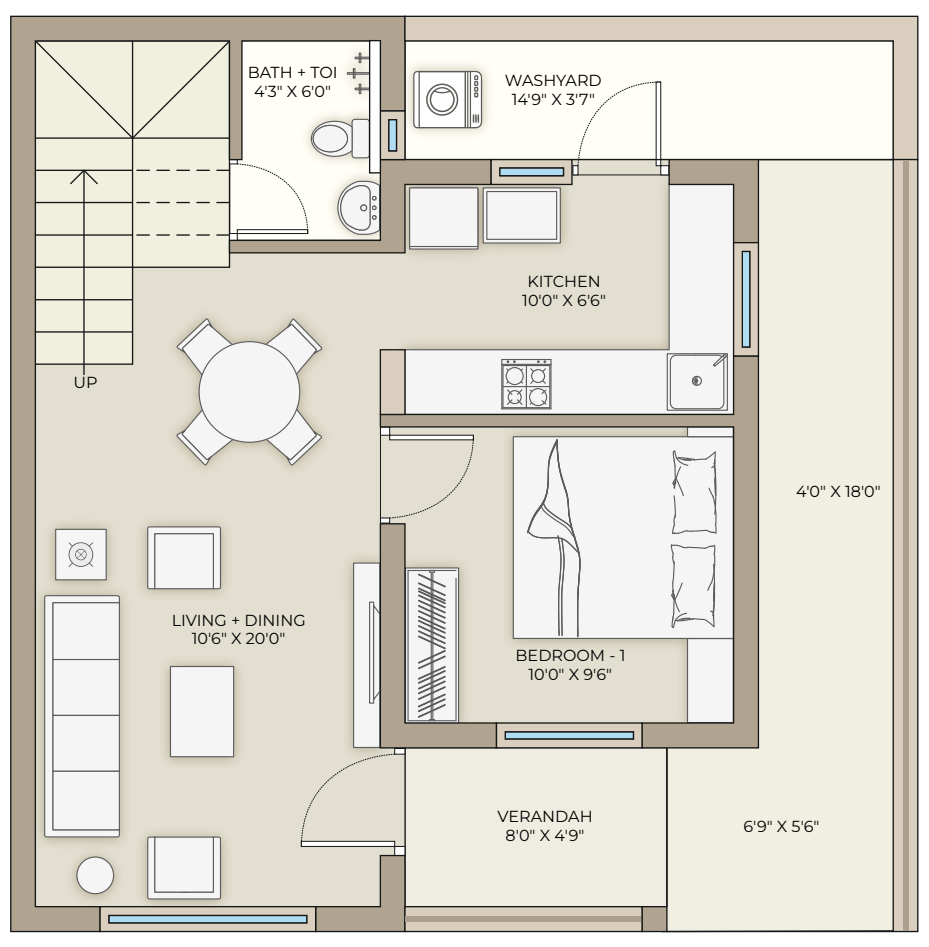
MASTER LAYOUT

TYPE - A

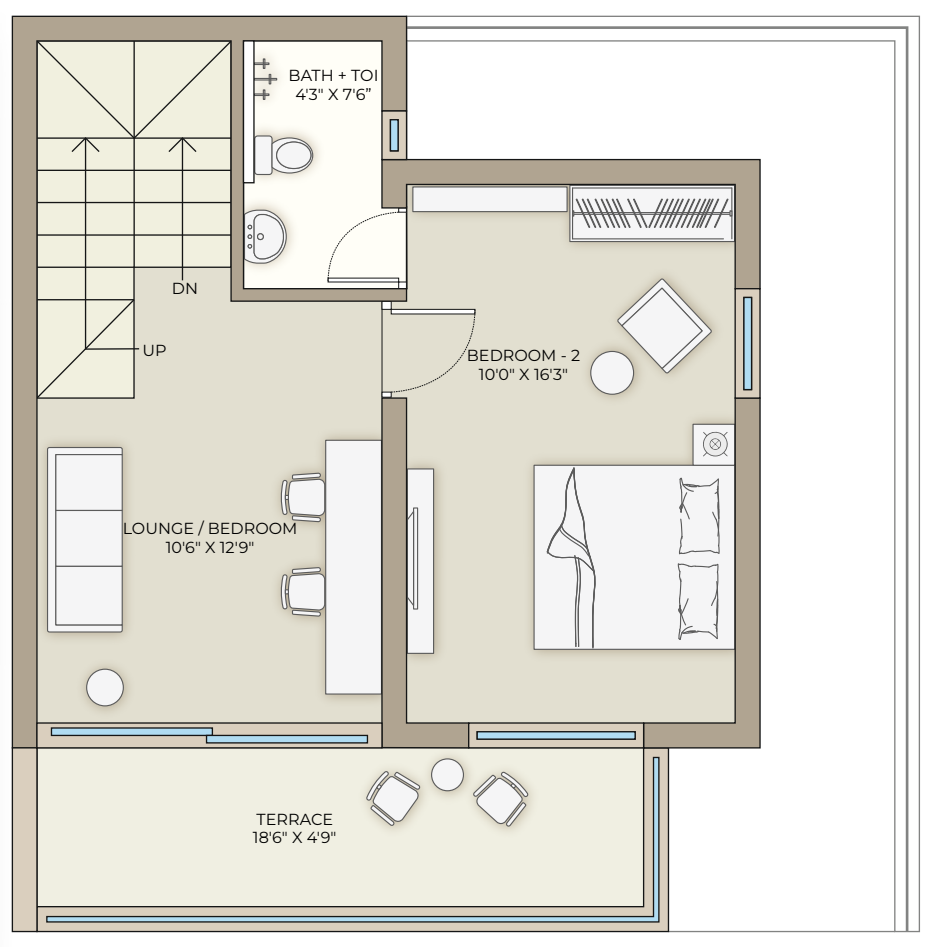


INDICATIVE NET AREA

Plot Area	81 SQYD
Builtup Area	122 SQYD



GROUND FLOOR



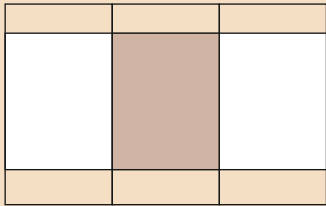
1ST FLOOR

MAKE WAY FOR
ABUNDANT HAPPINESS

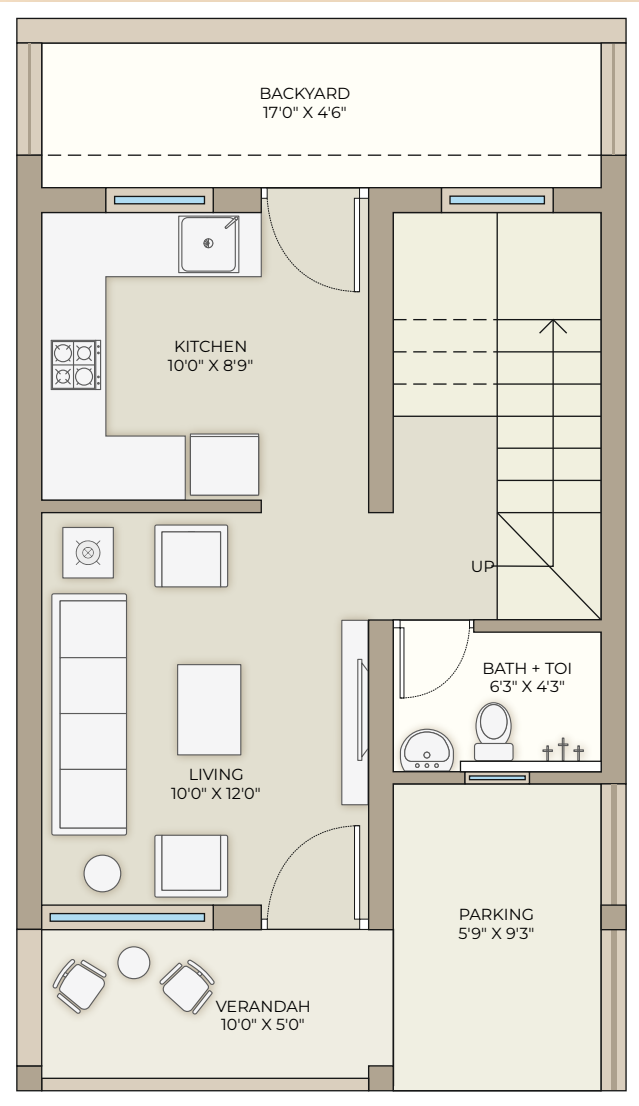
Vishwa Park is a residential marvel that boasts of abundant luxury for the ones who choose to live here. Elegantly designed villaments that turn your home comings into an experience to remember.



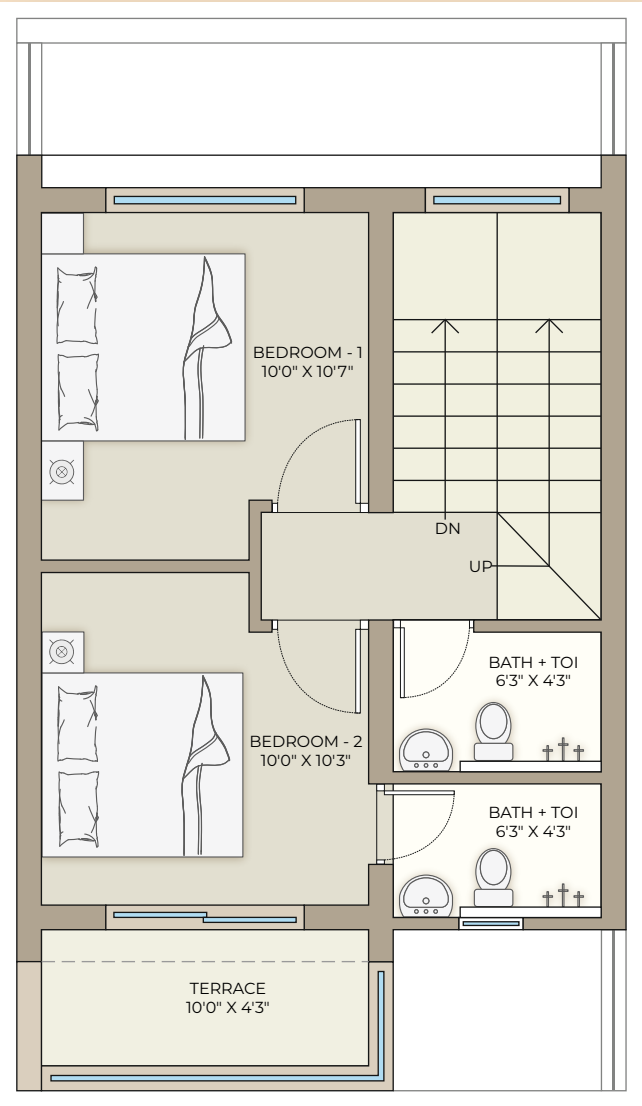
TYPE - B



INDICATIVE NET AREA	
Plot Area	66 SQYD
Builtup Area	104 SQYD



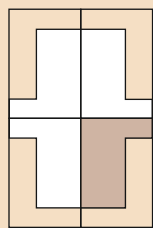
GROUND FLOOR



1ST FLOOR

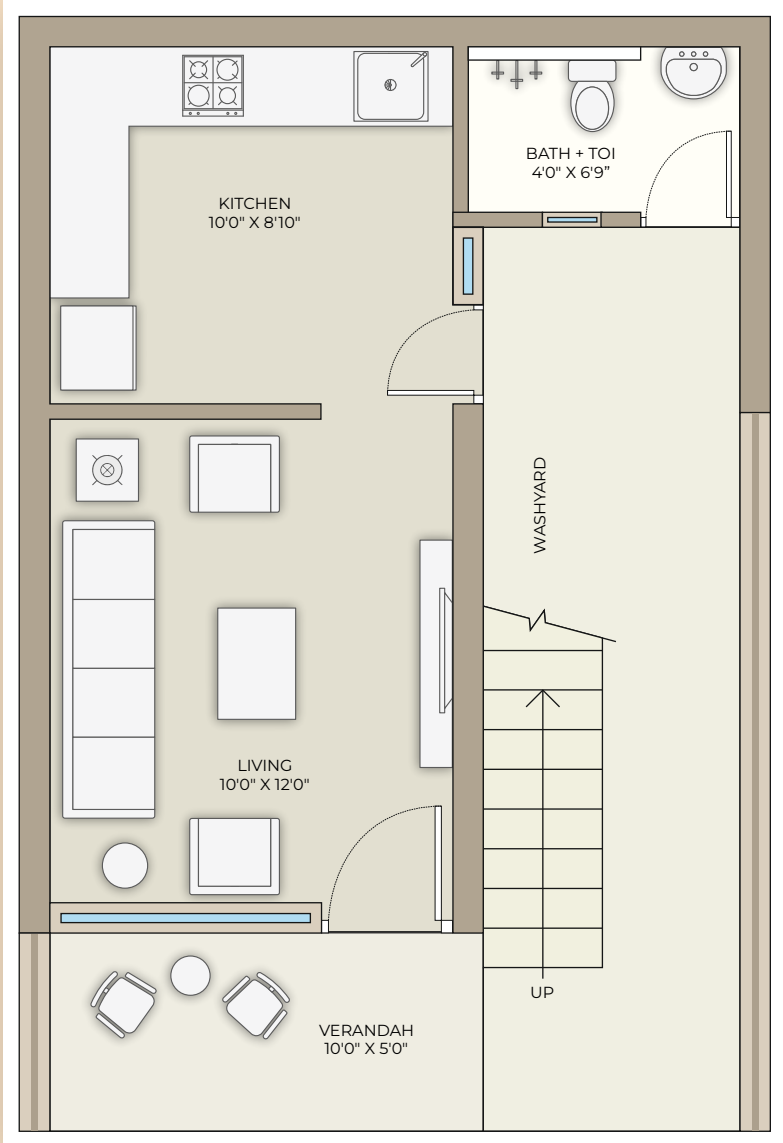


TYPE - C

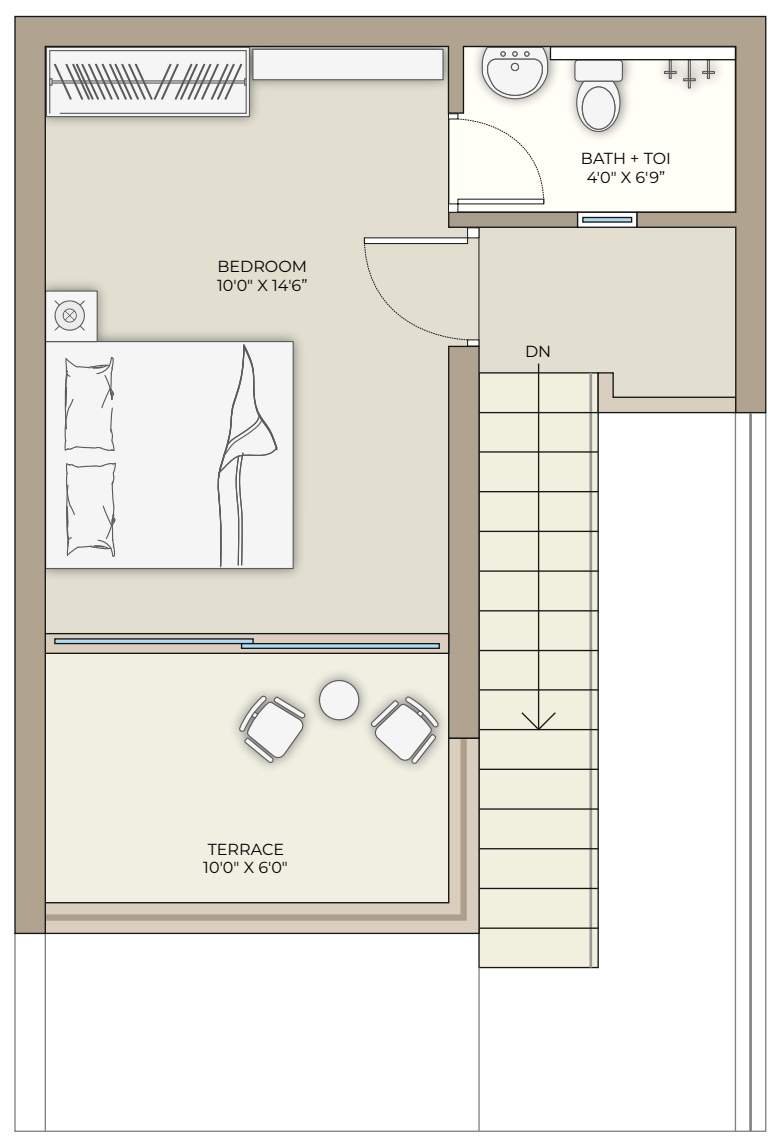


INDICATIVE NET AREA

Plot Area	55 SQYD
Builtup Area	71 SQYD



GROUND FLOOR



1ST FLOOR

EXQUISITE ARCHITECTURE

The Vishwa Park here offer the luxury of park living with refreshing panoramic views. The breathtaking landscape and exquisite architecture, where everyday will start with a fresh page. Colors, textures, tastes, scents, sounds will be heightened by the crisp open air that will connect you with nature, nurturing the rare and real moments of life.





SPECIFICATIONS



FLOORING

- All floors of high quality double charge vitrified tiles, rustic tiles in balcony, matt finish tiles in parking area & china mosaic/tiles on terrace.



KITCHEN

- **Platform :** Granite platform with SS Sink.
- Ceramic tile dado up to lintel level on wall above platform.



BATHROOMS

- Glaze / ceramic tiles dado up to lintel level.
- Premium quality sanitary wares & CP fittings.
- Overhead and underground water tank in each unit separately.



DOOR & WINDOW

- **Main Door :** Decorative veneer door with wooden / granite frame.
- **Internal door :** Flush door with granite frame.
- **Window :** Aluminium section with granite frame.



ELECTRICAL

- Single phase concealed copper wiring with adequate number of points in all rooms.
- Under ground main cable for each unit.
- Provision of RCCB/MCB distribution box.
- Provision of DTH points in drawing room and all bedroom & Gyser point in all bathroom.
- Provision of AC point in drawing room and all bedroom.



EXTERNAL & INTERNAL FINISHES

- External double coat mala plaster with taxture paint.
- Internal single coat mala plaster with putty finish.



VISHWA PARK
Viramgam Bypass Road,
Viramgam East, Viramgam,
Amdavad - 382150
 +91 97249 42742

MARUTI
Corporation



www.maruticorporation.co.in


Click Here

OFFICE
MARUTI CORPORATION
505, Interstellar,
Near Sahajanand Palace,
Thaltej, Amdavad, Gujarat - 380059, Bharat



+91 98259 28909

Notes: Plans, Specifications and Amenities are subject to change without prior notice. ♦ This brochure is just for an easy presentation and should not be treated as a legal document. ♦ The entire dimension given is approximate & unfinished. ♦ The details, facts, specifications and amenities are mentioned are indicative for information's purpose only and are subject to modification/compliance required